



# *Michelle*

**Protective Wear Inc.**  
**1-800-387-7142**  
Distributed by Ryan Medical



Check us out online [www.mpwinc.ca](http://www.mpwinc.ca)



Michelle Protective Wear Inc. (MPWI) is a Canadian owned company since 2000, located in Burlington, Ontario.

We specialize in radiation protective garments that meet Canadian standards. Here at Michelle Protective Wear Inc., we produce a quality line of protective garments in all styles of aprons with standard and custom sizing.

Our sewing room is managed by a professional tailor who has over 25 years experience and maintains a 100% inspection on all garments ensuring that our clients are always satisfied. Customer service and customer satisfaction is a priority.

Our materials are of the highest quality and most recognized around the world. We have a recycling program in place with the manufacturing plant so that none of our lead materials go into land fill or hazardous waste.

In order to ensure compliance to the Canadian standards, we use third party testing for all of our lead materials.

All lead vinyl products manufactured by Michelle Protective Wear Inc. have a 2 year warranty against manufacturing defects.

We continue to grow and strive towards meeting all of our customer needs.

Michelle Boisvert

A handwritten signature in black ink that reads 'Michelle'.

President

# Index

<b>One Piece Aprons</b>	<b>4-6</b>
<b>Two Piece Aprons</b>	<b>7-10</b>
<b>Frontal Aprons</b>	<b>11-19</b>
<b>Accessories</b>	<b>20</b>
<b>Apron Racking</b>	<b>21</b>
<b>Half Aprons</b>	<b>22</b>
<b>Lead Markers</b>	<b>22</b>
<b>Lead Gloves</b>	<b>23</b>
<b>Shielding</b>	<b>24-25</b>
<b>Lead Glasses</b>	<b>26-29</b>
<b>How to Order Lead and Apron Options</b>	<b>30</b>
<b>Sizing Chart</b>	<b>31</b>
<b>Measuring Instructions</b>	<b>32</b>
<b>Apron Order form</b>	<b>33</b>
<b>Colour Chart</b>	<b>34</b>
<b>Apron Care and Guidelines</b>	<b>35</b>

# MI-11-COBF

For those who want a full procedure lead wraparound apron constructed with a one piece front panel. This apron has been specially designed with soft padded shoulders and a unique pass through belt for maximum comfort.

**Lead equivalency:**      .5 mm Pb in front  
                                     .25 mm Pb in back

Extra thick shoulder pads  
for comfort

Tether for thyroid shield

Large pocket

2" wide buckle

Pass  
through for  
front buckle



## Options:

- Sleeve
- Axilla protection
- Embroidery
- Monogramming

Part Number

MI-11-COBF

Sizes

Available in x-small, small, medium, large, x-large and custom (see sizing chart on page 31)

Colour

Choose from our selection of colours and patterns (see page 35)



# MI-203-SB

Full procedure lead wraparound apron with two front panels that cross over to give full protection. It also has scooped sides, a shoulder buckle to help secure the front panel, lumbar support belt that transfers the weight from the shoulders to the hips, and soft padded shoulders.

**Lead equivalency:** .5 mm Pb in front  
.25 mm Pb in back

## Options:

- Sleeve
- Axilla protection
- Embroidery
- Monogramming



Part Number MI-203-SB

Sizes Available in x-small, small, medium, large, x-large and custom (see sizing chart on page 31)

Colour Choose from our selection of colours and patterns (see page 35)

# MI-203N-SB

Full procedure wraparound apron with two front panels that cross over to give full coverage. It also has a shoulder buckle to help secure the front panel, lumbar support belt that transfers the weight from the shoulders to the hips, and soft padded shoulders. This apron differs from the MI-203-SB in that there is no side buckle and an extra long velcro strip.

**Lead equivalency:**     .5 mm Pb in front  
                                     .25 mm Pb in back

Shoulder buckle

Tether for thyroid shield

Large pocket

Lumbar support belt

Scooped sides



## Options:

- Sleeve
- Axilla protection
- Embroidery
- Monogramming

Part Number	MI-203N-SB
Sizes	Available in x-small, small, medium, large, x-large and custom (see sizing chart on page 31)
Colour	Choose from our selection of colours and patterns (see page 35)

# MI-202-BT

This unique vest and kilt features a vest with a solid front panel and back support. Kilt wraps around and overlaps in the front. Fits securely on hips with extra wide velcro and buckle for added support.

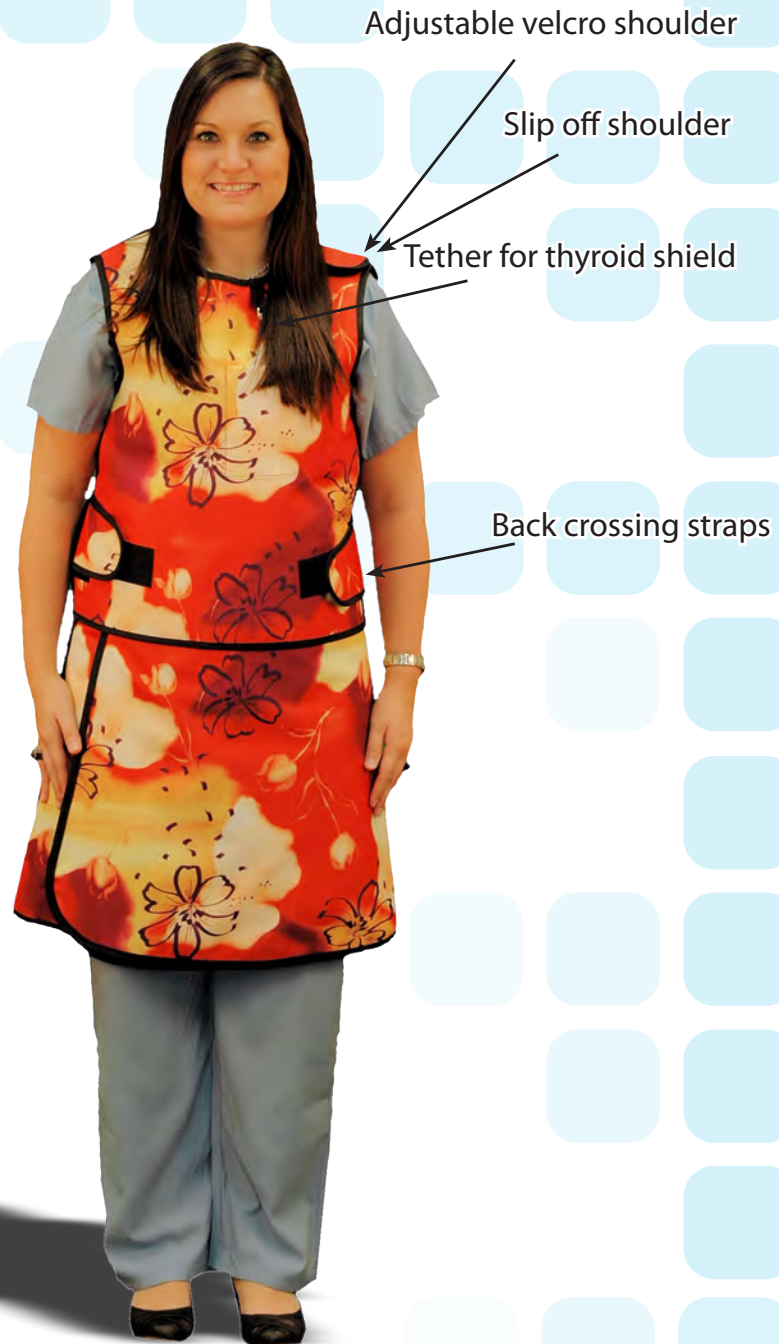
**Lead equivalency:**      .5 mm Pb in front  
                                     .25 mm Pb in back

## Options:

- Sleeve
- Axilla protection
- Embroidery
- Monogramming



Cross through straps



Adjustable velcro shoulder

Slip off shoulder

Tether for thyroid shield

Back crossing straps

Part Number MI-202-BT  
Sizes Available in x-small, small, medium, large, x-large and custom (see sizing chart on page 31)  
Colour Choose from our selection of colours and patterns (see page 35)



# MI-202-B

Vest and kilt features a vest with two front panels that cross over each other and extra velcro. Kilt wraps around and overlaps in the front. Fits securely on hips with extra wide velcro and buckle for added support.

**Lead equivalency:**      .5 mm Pb in front  
                                     .25 mm Pb in back

Extra thick shoulder pads  
for comfort

Tether for thyroid shield

Large pocket



## Options:

- Sleeve
- Axilla protection
- Embroidery
- Monogramming

Part Number	MI-202-B
Sizes	Available in x-small, small, medium, large, x-large and custom (see sizing chart on page 31)
Colour	Choose from our selection of colours and patterns (see page 35)



# MI-202-BF

Vest and kilt features a vest with two front panels that cross over each other to give full coverage. Kilt wraps around and overlaps in the front. Fits securely on hips with extra wide velcro and buckle for added support.

**Lead equivalency:**      .5 mm Pb in front  
                                     .25 mm Pb in back

## Options:

- Sleeve
- Axilla protection
- Embroidery
- Monogramming

Shoulder buckle

Large pocket

Front buckles



Part Number MI-202-BF

Sizes Available in x-small, small, medium, large, x-large and custom (see sizing chart on page 31)

Colour Choose from our selection of colours and patterns (see page 35)

# MI-202-C

Vest and kilt features a vest with a solid front panel with an elastic back which crosses over to Velcro by the hips. Kilt wraps around and overlaps in the front. Fits securely on hips with extra wide Velcro and buckle for added support.

**Lead equivalency:**      .5 mm Pb in front  
                                     .25 mm Pb in back



## Options:

- Sleeve
- Axilla protection
- Embroidery
- Monogramming

Part Number MI-202-C  
Sizes Available in x-small, small, medium, large, x-large and custom (see sizing chart on page 31)  
Colour Choose from our selection of colours and patterns (see page 35)

# MI-11-S

Economy frontal apron, features open back with durable 1" tie straps that cross the back and secure in front for a snug and comfortable fit.

**Lead equivalency:** .5 mm Pb in front

## Options:

- Thyroid shield
- Sleeve
- Axilla protection
- Embroidery
- Monogramming

Extra thick shoulder pads  
for comfort

Tie in the front



Part Number MI-11-S

Sizes Available in x-small, small, medium, large, x-large and custom (see sizing chart on page 31)

Colour Choose from our selection of colours and patterns (see page 35)



# MI-11-B

Frontal apron offers both comfort and ease of wearing with single 2" buckle that wraps around the front. Adjustable back shoulder strap keeps apron snug.

**Lead equivalency:** .5 mm Pb in front

Extra thick shoulder pads  
for comfort

Shoulder support  
strap



Crossing back  
straps with  
front buckle



## Options:

- Thyroid shield
- Sleeve
- Axilla protection
- Embroidery
- Monogramming

Part Number MI-11-B  
Sizes Available in x-small, small, medium, large, x-large and custom (see sizing chart on page 31)  
Colour Choose from our selection of colours and patterns (see page 35)



# MI-11-BE

Frontal apron features elastic back panels for added comfort and support with 2" front strap that wraps around waist for an adjustable fit.

**Lead equivalency:** .5 mm Pb in front

## Options:

- Thyroid shield
- Sleeve
- Axilla protection
- Embroidery
- Monogramming

Extra thick shoulder pads  
for comfort

Front buckle

Elastic back for comfort



Part Number MI-11-BE

Sizes Available in x-small, small, medium, large, x-large and custom (see sizing chart on page 31)

Colour Choose from our selection of colours and patterns (see page 35)

# MI-13-SB

Back relief frontal apron transfers the weight from the shoulders to the hips with the aid of lumbar support belt. Adjustable back shoulder strap keeps apron snug.

Lead equivalency: .5 mm Pb in front



Extra thick shoulder pads  
for comfort

Lumbar  
support  
belt



## Options:

- Thyroid shield
- Sleeve
- Axilla protection
- Embroidery
- Monogramming

Part Number	MI-13-SB
Sizes	Available in x-small, small, medium, large, x-large and custom (see sizing chart on page 31)
Colour	Choose from our selection of colours and patterns (see page 35)

# MI-11-EV

Frontal apron featuring elastic back for added comfort and support. Front velcro flaps at waist.

Lead equivalency: .5 mm Pb in front

## Options:

- Thyroid shield
- Sleeve
- Axilla protection
- Embroidery
- Monogramming

Elastic back for comfort



Large pocket

EZ velcro straps



Part Number MI-11-EV

Sizes Available in x-small, small, medium, large, x-large and custom (see sizing chart on page 31)

Colour Choose from our selection of colours and patterns (see page 35)



# MI-12-DE

Surgical drop & flex back offers top of the shoulder velcro flaps for an adjustable fit. Features elastic back panels for added comfort and support. For quick removal, apron releases at shoulder and waist.

**Lead equivalency:** .5 mm Pb in front

Adjustable velcro shoulder  
for comfort

Elastic back for  
comfort

Large pocket

EZ drop velcro  
straps



## Options:

- Thyroid shield
- Sleeve
- Axilla protection
- Embroidery
- Monogramming

Part Number MI-12-DE  
Sizes Available in x-small, small, medium, large, x-large and custom (see sizing chart on page 31)  
Colour Choose from our selection of colours and patterns (see page 35)



# MI-12-D

Surgical drop apron features front velcro flaps with back criss-cross straps for easy removal, from both over or under the surgical gown without disturbing the sterile field.

**Lead equivalency:** .5 mm Pb in front

## Options:

- Thyroid shield
- Sleeve
- Axilla protection
- Embroidery
- Monogramming

Extra thick shoulder pads  
for comfort



Back cross-  
ing Velcro  
Straps



Criss-cross  
Back



Part Number MI-12-D

Sizes Available in x-small, small, medium, large, x-large and custom (see sizing chart on page 31)

Colour Choose from our selection of colours and patterns (see page 35)

# MI-14-U

Urology frontal apron or sit down apron, offers both comfort and ease of wearing with elastic back panels for added comfort and support. Adjustable front velcro flaps and back shoulder strap to keep apron snug.

**Lead equivalency:** .5 mm Pb in front



Part Number	MI-14-U
Sizes	Available in x-small, small, medium, large, x-large and custom (see sizing chart on page 31)
Colour	Choose from our selection of colours and patterns (see page 35)

# MI-MATERNITY

Maternity frontal apron with removable side panels to convert into a standard frontal.

Lead equivalency: .5 mm Pb in front

## Options:

- Thyroid shield
- Sleeve
- Axilla protection
- Embroidery
- Monogramming



Extra thick shoulder pads  
for comfort

Cross back strap  
with front buckle

Removable side  
panels

Part Number MI-MATERNITY  
Sizes Available in x-small, small, medium, large, x-large and custom (see sizing chart on page 31)  
Colour Choose from our standard colours and patterns (see page 35)

# Accessories

## Lumbar Support Belt

The Lumbar Support Belt helps to transfer the weight of any apron from the shoulders to the hips. The belt is 6" wide with a large buckle located in the front. When ordered with an apron, the belt can be colour coordinated and tethered.



MI-SB-XS Extra small

MI-SB-S Small

MI-SB-M Medium

MI-SB-L Large

MI-SB-XL Extra large

## Corset Support Belt

The Corset Support Belt has been carefully designed to fit your waist perfectly. The belt is fully adjustable and will follow the contour of your waist by simply pulling on the draw cord. The belt velcros together in the front.

UL-SCB-S Small 25"-30"

UL-SCB-M Medium 30"-35"

UL-SCB-L Large 35"-40"

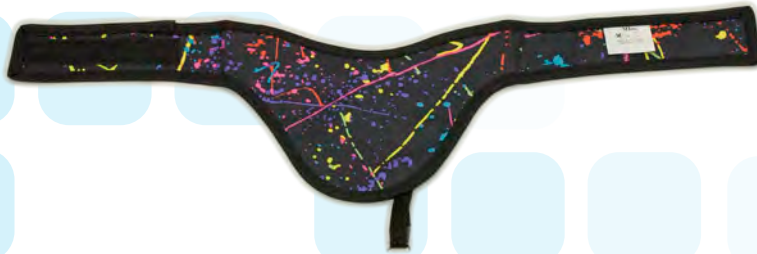
UL-SCB-XL XL 40"-45"

UL-SCB-XXL XXL 45"-50"

UL-SCB-XXXL Large 50"-55"



## Thyroid Shield



Thyroid Shield is available with a tethered ring to attach to an apron. Thyroid shield may also be left separate or sewn to the apron. With the order of a Vest and Kilt or Full procedure apron, a tethered thyroid shield is included at no charge.

MI-TC-C Custom

MI-TC-R Not tethered

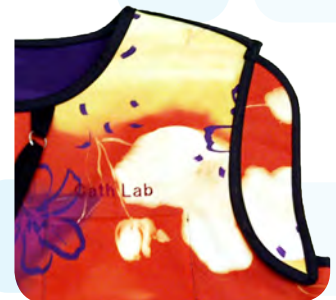
MI-TC-T Tethered

## Sleeves & Axilla Protection

Sleeves and axilla protectors are available as an option for every apron we carry. Typically, our sleeves/axilla are sewn onto the armhole of the apron, but if so desired, can be detachable. (domes or velcro).



MI-SLV



MI-AXILLA





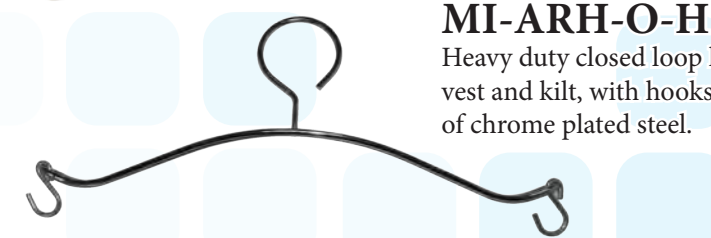
### MI-ARH-O

Heavy duty open loop hanger for lead apron. Made of chrome plated steel.



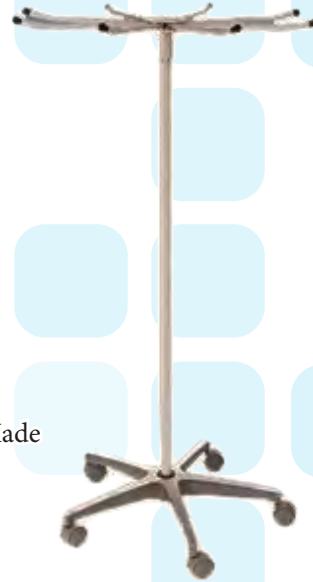
### MI-ARH-C

Heavy duty closed loop hanger for lead apron. Made of chrome plated steel.



### MI-ARH-O-H

Heavy duty closed loop hanger for lead vest and kilt, with hooks to hold kilt. Made of chrome plated steel.



### MI-LT-SR

Porta-Rack is a totally mobile unit for up to 8 aprons and designed where space is at a premium. Sturdy aluminum five leg base with nylon casters uses only 24" of floor space.

## Mobile Apron Rack

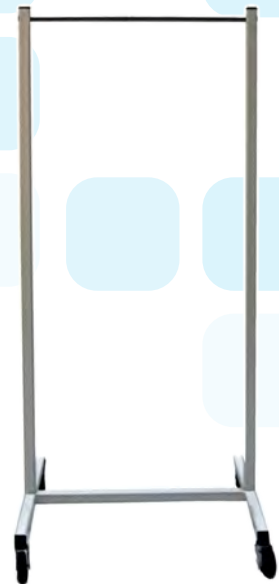
Heavy duty casters with powder coated steel construction. These units are extremely mobile allowing aprons, thyroid shields, etc. to be easily transported to workstations.

### MI-MR-24"

Small Rack: 58"h x 24"w x 22.5"d

### MI-MR-40"

Large Rack: 58"h x 40"w x 22.5"d



## Wall Mounted Apron Rack

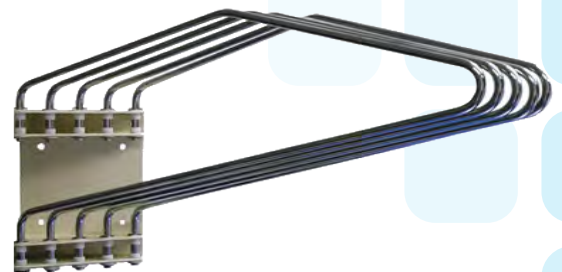
Wall Mount Swing Arm Apron Rack features 5 individual chrome shoulder shape swing arms that fold flush against the wall. Available in right and left folding models. Simply hang two models side-by-side for a 10 hanger wall console unit.

### MI-WR5

Right handed swing rack mounts on the wall. Holds 5 frontal or wrap around aprons.

### MI-WL5

Left handed swing rack mounts on the wall. Holds 5 frontal or wrap around aprons.



L

R

# Half Apron

- .5mmPb lead equivalency standard Minc Lite
- .5mmPb equiv. non lead. Upon request
- .5mmPb for Nuclear Medicine. Upon request
- Available with buckle, velcro waistband or waistband with hoop

MI-DA-C	Child 12" Width x 10" Length
MI-DA-S	Small 14" Width x 12" Length
MI-DA-M	Medium 16" Width x 14" Length
MI-DA-L	Large 18" Width x 16" Length
MI-DA-CU	Custom as per request



## Dental Aprons

These aprons are designed for full-coverage of the neck, throat, chest, shoulders and gonadal area.

- .3mm lead equivalency protection
- Velcro closure

MI-DAC	Child 19" Wide x 22" Length
MI-DAA	Adult 23" Wide x 28" Length

## Pb Markers



MI-Pb-1A	1/2" R & L Position Marker with 5/16" initials or numbers
MI-Pb-2A	1/2" R & L Position Marker without 5/16" initials or numbers
MI-Pb-3A	1/2" R & L with Three 5/16" initials or numbers
MI-Pb-4A	1/2" R & L with Two 5/16" initials or numbers
MI-Pb-5A	1/2" R & L without initials or numbers (same as 4A)
MI-Pb-6A	7/16" R & L with Two or Three 1/4" initials
MI-Pb-7A	7/16" R & L with Two or Three 1/4" numbers
MI-Pb-8A	7/16" R & L without initials or numbers
MI-Pb-9A	5/16" Right & Left spelled out with 1/3" initials
MI-Pb-11A	Clip Marker (in Silver or Gold)

### Please Note when ordering:

All mounted markers are constructed of an aluminum frame with dense lead letters or numbers which are permanently encased in epoxy.

Personalized markers ordered with 3 initials or numbers, the initials or numbers will be stacked vertically.

Mounted markers have no hole. If a hole is desired, please indicate at time of order.

All markers mounted in epoxy can be ordered in different colours (red, amber, yellow, green, blue, and clear). Please specify colour when ordering. If no colour is specified, we will choose the colour.

Colours WILL vary in shade from order to order

# Gloves

## MI-SH-100V



Seamless Lead Vinyl Gloves are a 15" one-piece dip-molded glove with supple vinyl cover and foam liner. Available in pairs or single gloves.

- Standard Protection: 0.5mm Pb Equivalency
- Colours Burgundy, Brown, Champagne, Grey and Dark Blue

## MI-SH-250TR

Seamless lead vinyl dipped gloves are available in three sizes. Sterilizable by gas or liquid systems. Removable cotton liner insert included. Colour: Beige

- Standard Protection: 0.5mm Pb Equivalency



## MI-SH-101

Lead Mittens are a 15" one piece dip molded mitten featuring soft supple black goat skin leather cover with foam liner. Provides full hand and palm protection. Also pictured is the Slit Mitten that features same black leather cover with foam liner and comes with base of the finger slit allowing for dexterity and hand protection. Available in pairs or single gloves.

- Standard Protection: 0.5mm Pb Equivalency



## Attenuator-X MI-SH-AX- (size)



For use during interventional procedures, diagnostic heart catheterization, coronary angioplasty, angiocardiology, pain management, orthopedics and fluoroscopy procedures. Features: 100% sterile, powder free, natural rubber latex, highest attenuation efficiency, lead free. Textured palm finger surface for enhanced grip and touch.

Sizes: 6.5, 7, 7.5, 8, 8.5, 9

Radiation Beam Energy Level	Skin Dose Reduction
60kV	63%
80kV	53%
100kV	46%
120kV	37%

## MI-LT-MIT-2

Lead mit features palm slit allowing fingers to exit for freedom of movement during radiography. Contour cut to fit the arm and covered in royal blue nylon.

- Standard Protection: 0.5mm Pb Equivalency





# Shielding

## CT Eye Shields

MI-SH-ARE-4 20/pkg

CT Eye Shields, designed for use in head and facial CT scans, mold over the nasal bridge with the eye shield portions laying flat over the patient's closed eyes allowing for about a 50% dose savings to the eye lens. Shield consists of a single piece thin (1mm) layer of bismuth impregnated synthetic rubber with adhesive back strip to ensure a tight seal with minimal air gaps. Intended as a single use product to prevent against potential biological contamination



## Adult CT Breast Shield

MI-SH-ARB-42 Medium 1 ea

MI-SH-ARB-53 Large 1 ea



CT Breast Shields offers up to a 57% reduction of radiation exposure during CT scan without significant changes in image quality, including artifacts and beam hardening effects. Shield consists of a thin (1mm) piece of bismuth impregnated synthetic rubber covering that mounts firmly on an offset quarter inch foam base. Designed for multiple uses. Additional foam offsets available.

## Pediatric CT Breast Shield

MI-SH-PbS-N Neonate 10/pkg

MI-SH-PbS-1 1 year old 8/pkg

MI-SH-PbS-5 5 year old 6/pkg

MI-SH-PbS-10 10 year old 4/pkg

CT Breast Shields offer up to a 57% reduction of radiation exposure during CT scan without significant changes in image quality, including artifacts and beam hardening effects. Shield consists of a thin (1mm) piece of bismuth impregnated synthetic rubber covering that mounts firmly on an offset quarter inch foam base. Designed for multiple uses. Additional foam offsets available.



## CT Thyroid Shield

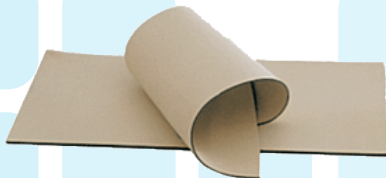
MI-SH-ART-4 10/pkg



CT Thyroid Shields, when used for the soft tissues of the neck, offer a 60% dose savings to the radiosensitive thyroid gland during CT procedures. Shield consists of a thin (1mm) piece of bismuth impregnated synthetic rubber and features a curved notch in the center to ensure proper positioning. Lateral bow ties are also attached to the inferior flaps of the shield to accommodate larger necks or larger thyroid glands that extend beyond the clavicle or sternum. Adhesive back holds the shield firmly in place as patient breathes and swallows.

## Coated Lead Vinyl Blockers

feature a smooth sanitary non-absorbent surface for easy cleaning and are stocked in a range of sizes. Available in 0.5mm and 1.0mm Pb lead equivalency. Colour: Beige



## Coated Lead Vinyl Sheeting drapes

readily for on the job applications wherever flexible lead sheeting is required and is offered in a variety of lead equivalencies. Sold in sheet size (48x96" / 121.9 x 243.8cm) or cut to specifications. Cutting charge applies. Colour: Beige



# Porta-Shield

Porta-Shield is ideal for patient protection during diagnostic procedures and features adjustable height from 36 to 60" (91.4 x 152.4cm) with sturdy five leg base for stable mobility. Available in three sizes and covered in royal blue nylon.

- Standard Protection: 0.5mm Pb Equivalency



MI-SH-1003



MI-SH-1002

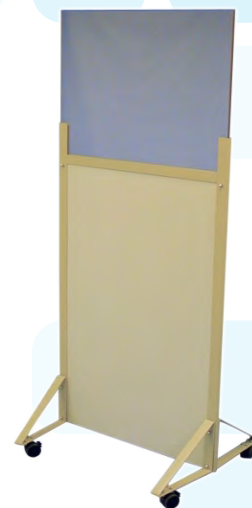


MI-LT-MSB-2

## Regular Clear Pb Barrier MI-SH-56-603

Clear Pb Acrylic Mobile X-Ray Barriers feature optically clear and shatter resistant lead acrylic windows. Available in a variety of sizes for shielding 1, 2 or more people. Opaque lower panels finished in beige. Attractive, durable, easy to assemble and manoeuvre.

- Standard Protection: 0.5mm Pb Equivalency



## Jumbo Clear Pb Barrier MI-SH-56-604

Clear Pb Acrylic Mobile X-Ray Barriers feature optically clear and shatter resistant lead acrylic windows. Available in a variety of sizes for shielding 1, 2 or more people. Opaque lower panels finished in beige. Attractive, durable, easy to assemble and manoeuvre.

- Standard Protection: 0.5mm Pb Equivalency



# MI-PM-PL-100

Manufactured of lightweight nylon, the MI-PM-PL-100 was designed to be comfortable and provide protection for the entire eye area without the need of an added side shield for lateral exposure. The curved front and temples with rubber tips assure a close secure fit that also provides splash protection. An adjustable “snap tip” head cord is standard with each model. Available with or without side shields



Weight: 60 grams  
Lead Equivalency - Front: .75mm  
Lead Equivalency - Sides: .35mm  
Colour: Bronze, Silver, Black, Satin Gray Blue, Crimson  
Please contact us for further options and colours  
Lens Material: Schott RS-520 (SF-6)



# MI-PM-MAX100S

Slightly smaller than the MI-PM-PL-100, this lightweight polycarbonate wrap around frame is available with or without side shields and ultra soft fixed rubber nosepiece.

Weight: 63 grams  
Lead Equivalency - Front: .75mm  
Lead Equivalency - Sides: .25mm  
Colour: Crimson, Silver, Blue, Black  
Lens Material: Schott RS-520 (FS-6)  
Available Rx: Plano (non-prescriptive), single, bifocal, progressive



# MI-BR-VIPER



Viper Lead Glasses available with or without side shields are designed for medium and small faces. They feature soft rubber non slip temples ends and nose pad to maximize fit and comfort. They are ultra lightweight at only 64 grams. Lead equivalent front .75mmPb.

Colours available are Blue, Black, Silver and Red.  
Lead Equivalency - Sides: .25mm  
Available Rx: Plano (non-prescriptive), single, bifocal.



# MI-AT-FB-103

Manufactured of durable lightweight aluminum, they are designed to be comfortable and provide protection for the entire eye area without the need of an added side shield for lateral exposure. The curved front and temples with rubber tips assure a close secure fit that also provide splash protection. The frame features adjustable non-slip nose pads for maximum comfort as well as flexible spring hinge temples.

Weight: 71.8 grams  
Lead Equivalency - Front: .75mm  
Colour Silver and Matte Black



# MI-BR-JOLT

This frame has a pronounced curve and fat temple design which protects the entire eye area without the need for side shields. Features an adjustable nose cushion.

Weight: 71 grams  
Lead Equivalency - Front: .75mm  
Lens Material: Schott RS-520 (SF-6)  
Colour Black, Gloss Black, Satin white, Tortoise



# MI-PM-NL-100S

Manufactured of lightweight nylon, the Pulse lites were designed to be comfortable and provide protection for the entire eye area without the need of an added side shield for lateral exposure. The curved front and temples with rubber tips assure a close secure fit that also provides splash protection. An adjustable "snap tip" head cord is standard with each model. Available with or without side shields.

Weight: 60 grams



Lead Equivalency - Front: .75mm  
Lead Equivalency - Sides: .35mm  
Colour: Black, Orange, Blue, Purple, Green  
Lens Material: Schott RS-520 (FS-6)



# MI-BR-70AL

Panoramic goggle style frame made of impact resistant propionate. Front frame has molded side-shield protection. The temple length and frame angle are adjustable for a uniform custom fit.



Weight: 75 grams  
Lead Equivalency - Front: .75mm  
Lead Equivalency - Sides: .25mm  
Colour: Blue/Clear  
Lens Material: Schott RS-520 (SF-6)

# MI-BR-74EL

Nylon frame has large molded side-shield protection. The nylon frame allows for flexibility in fit and features a universal form-fit bridge for maximum control.



Weight: 73 grams  
Lead Equivalency - Front: .75mm  
Lead Equivalency - Sides: .25mm  
Colour: Blue  
Lens Material: Schott RS-520 (SF-6)

# MI-Prepoval-553



Constructed of optical steel base metal with gold electroplate. Comes with custom fitted 0.50mm leaded side shields that create a seal to the front lenses for necessary protection from oblique angle exposure. Includes adjustable non-slip silicone nose pads for maximum comfort.

Weight: 62 grams  
Lead Equivalency - Front: .75mm  
Lead Equivalency - Sides: .25mm  
Colour: Metallic  
Lens Material: Schott RS-520 (SF-6)  
Available in Plano (non-prescriptive) or Rx: single, bifocal, progressive

# MI-BR-PREPOVAL

Constructed of optical steel base metal with bronze electroplate. Comes with custom fitted 0.50mm leaded side shields that create a seal to the front lenses for necessary protection from oblique angle exposure. Includes adjustable non-slip silicone nose pads for maximum comfort.

Lead Equivalency - Front: .75mm  
Lead Equivalency - Sides: .25mm  
Colour: Metallic  
Lens Material: Schott RS-520 (SF-6)  
Available in Plano (non-prescriptive) or Rx: single, bifocal, progressive





## MI-BR-CRUISER

Cruiser Lead Glasses feature excellent wrap around for splash protection with close fit to cheeks. They are designed to be more comfortable for a larger head and are made with ultra soft nose pads and larger lenses. Weight is only 61 grams. Lead equivalent front 75mmPb. Colours available are Bronze, Aqua and Black.



## MI-AT-FB900

Smaller light weight goggle style fits over prescription glasses. Eliminates need for expensive prescription leaded glasses.

Weight: 76 grams  
Lead Equivalency - Front: .5mm  
Lead Equivalency - Sides: .25mm  
Colour: Black  
Lens Material: Schott RS-520 (SF-6)



## MI-AA-LG190M



Goggle style protection fits over prescription glasses. Eliminates need for expensive prescription leaded glasses.

Weight: 76 grams  
Lead Equivalency - Front: .5mm  
Lead Equivalency - Sides: .25mm  
Colour: Black  
Lens Material: Schott RS-520 (SF-6)

## MI-BR-WB-53

The new wrap with flexible hinge design for increased durability. This eyewear provides excellent peripheral vision with leaded glass side shields for increased scatter protection.

Weight: 85 grams  
Lead Equivalency - Front: .75mm  
Lead Equivalency - Sides: .75mm  
Colour: Crimson or Green



# How to order Lead Apron Options

All our categories reflect our highest standards in manufacturing and raw materials used. Our regular lead and lead composite (Minc Lite) materials meet Canadian standards for radiation protection. Additional lead layer options are available upon request. We are one of the most recognized custom manufacturers of protective wear in Canada. Our goal is to always be able to meet your needs.

## Econo Line

The Econo Line are basic aprons with no added options made of quality materials in Male, Female, and Unisex sizing (Extra Small, Small, Medium, Large and Extra Large). Fabric choices are limited to solid colour nylon only. Aprons are available with Lead Vinyl or Minc Lite composite lead. To order your Econo Line apron please add these product numbers to the end of the desired apron catalogue number.

Econo Line lead vinyl	Cat# -EC-RL
Econo Line Minc Lite	Cat#-EC-ML

## Standard Line

The Standard Line aprons are made of quality materials in Male, Female, and Unisex sizing (X-Small, Small, Medium, Large and X-Large). Options available with the Standard Line are breast pocket and 2 lines of embroidery. Fabric choices include all solid colour nylon and ripstop fabrics. Aprons are available with Lead Vinyl or Minc Lite composite lead. To order your Standard Line apron please add these product numbers to the end of the desired apron catalogue number.

Standard Line lead vinyl	Cat#-ST-RL
Standard Line Minc Lite	Cat#-ST-ML

## Prestige Line

The Prestige Line of aprons are made to measure to give you a custom fit. Options available are a breast pocket, 2 lines of embroidery and Monogramming. Fabric choices include all solid colour nylon, ripstop and printed pattern fabrics. Aprons are available with Lead Vinyl, Minc Lite composite lead or Non Lead composite. To order your Prestige Line apron please add these product numbers to the end of the desired apron catalogue number.

Prestige Line lead vinyl	Cat#-PR-RL
Prestige Line Minc Lite	Cat#-PR-ML
Prestige Line Non lead	Cat#-PR-NL

**Note: Custom sizes and prices are based on measurements larger than extra large.  
Aprons longer than 40" will be charged an additional \$10 per inch.**

# Standard Apron Sizing

Frontal	Measurements		Chest
X Small	Width 21"	Length 34"	Up to 36" chest
Small	Width 22"	Length 35"	Up to 38" chest
Medium	Width 23"	Length 37"	Up to 40" chest
Large	Width 24"	Length 39"	Up to 42" chest
X Large	Width 25"	Length 41"	Up to 44" chest
XX Large	Width 26"	Length 43"	Up to 46" chest

Male Sizing	Chest	Waist	Hip	Vest Length	Kilt Length	Wrap Length
X Small	36"	34"	37"	23.5"	19"	38.5"
Small	38"	36"	39"	24.5"	20"	39.5"
Medium	40"	38"	41"	25"	21"	40.5"
Large	42"	40"	43"	25.5"	22"	41"
X Large	44"	42"	45"	26"	23"	41.5"
XX Large	46"	44"	47"	26.5"	24"	42"
XXX Large	48"	46"	49"	27"	24"	42.5"

Female Sizing	Chest	Waist	Hip	Vest Length	Kilt Length	Wrap Length
X Small	34"	28"	35"	21"	19"	36.5"
Small	36"	30"	37"	21.5"	20"	37.5"
Medium	38"	32"	39"	22"	21"	38"
Large	40"	34"	41"	22.5"	22"	39"
X Large	42"	36"	43"	23"	23"	40"
XX Large	44"	38"	45"	23.5"	24"	41"
XXX Large	46"	40"	46"	24"	24"	41"

Tall and Short sizes are available upon request. Our tall sizes are 3" taller than standard lengths and short sizes are 2" inch shorter than standard lengths. Custom lengths are available and will be subject to an additional charge.



# Standard Apron Spec Sheet

Customer:

Order #:

Sales Rep:

Date:

P.O. #:

Serial #:

Apron Style:

Sex:

Size:

Lead type:

Outside Colour:

Inside Colour:

Outside Pocket:

Inside Pocket:

Axilla (L):

Axilla (R):

Sleeve (L):

Sleeve (R):

Support Belt:

Embroidery:

Line 1:

Location:

Thread Colour:

Font:

Line 2:

Location:

Thread Colour:

Font:

Thyroid Collar:

Attached:

Quantity:

Outside Colour:

Inside colour:

Embroidery:

Font:

Thread Colour:

Location:

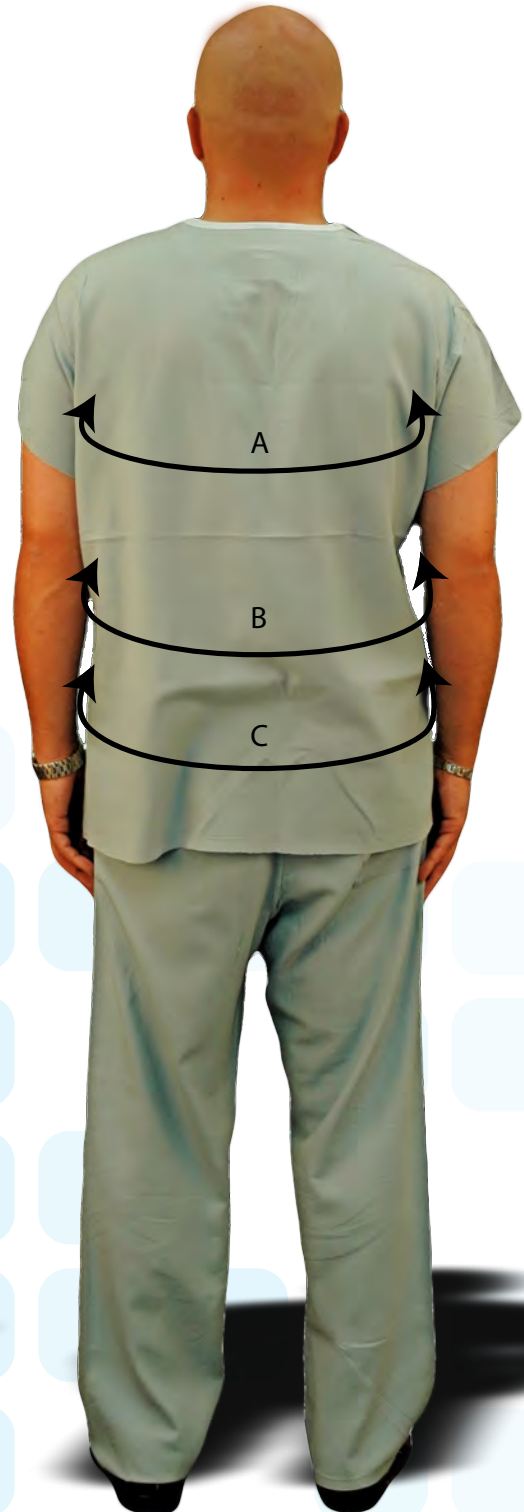
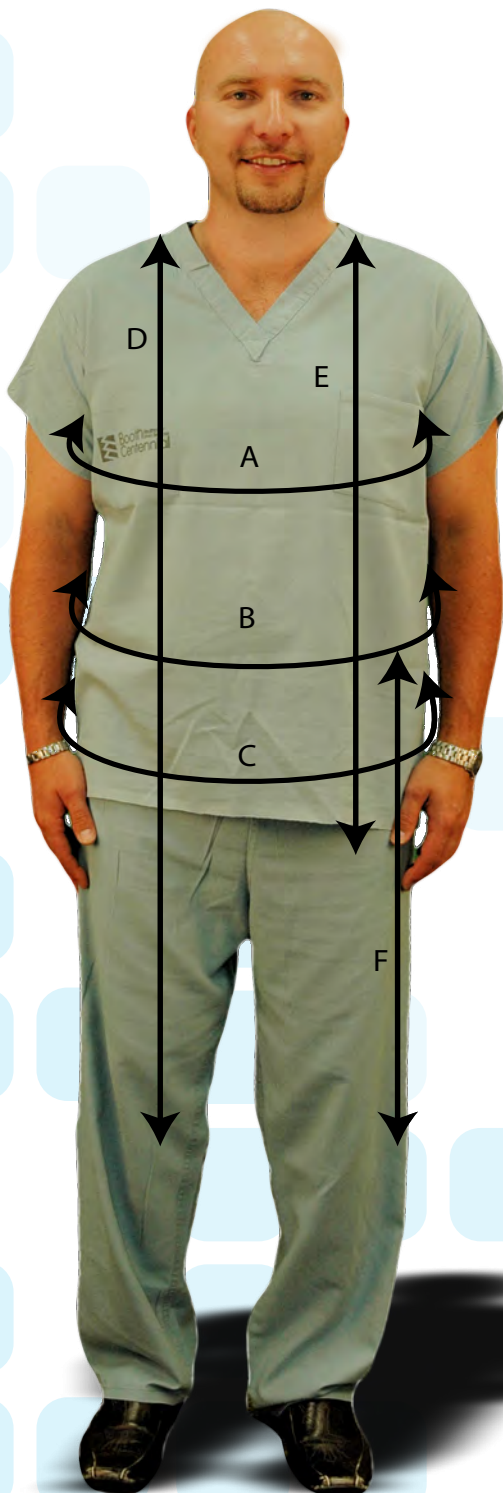
Special Instructions:



# Measuring Instructions

For made-to-measure orders, correct measurements are critical. The photos on this page will help you fully understand how to measure someone wearing everyday clothes. Please note that all measurements are required for made-to-measure orders. For vest and kilt combinations, the arrows are also necessary.

A - Chest Width (all around) B - Waist (all around) C - Hips (3" below waist) (all around)  
D - Total Length E - Shoulder to Hips F- Waist to Knee (kilt)





# Custom Apron Spec Sheet

Customer:

Order #:

Sales Rep:

Date:

P.O. #:

Serial #:

Apron Style:

Sex:

Lead type:

Outside Colour:

Inside Colour:

Neck:

Front Shoulder width:

Length:

Outside Pocket:

Inside Pocket:

Chest:

Back Shoulder width:

Vest Length:

Axilla (L):

Axilla (R):

Waist:

Shoulder:

Kilt length:

Sleeve (L):

Hips:

Arm hole length:

Sleeve (R):

Support Belt:

Embroidery:

Line 1:

Location:

Thread Colour:

Font:

Line 2:

Location:

Thread Colour:

Font:

Thyroid Collar:

Attached:

Quantity:

Outside Colour:

Inside colour:

Embroidery:

Font:

Thread Colour:

Location:

Special Instructions:

# Apron Care & Guidelines

The following guidelines will help maintain your apron's safe performance as well as keep your apron looking great for many years to come.

## 1. Inspection (Please inspect your aprons thoroughly upon receipt and at regular intervals )

**During radiographic inspection you may observe one or all of the following:**

- Light spots, small or large, may appear which indicate localized thicker attenuating content particles.
- Darker shaded areas can appear which usually indicates a thickness variation in the material. If a sharp edge defines the darker area, this may be the result of damage to the apron. This is often caused by stress from misuse and / or improper handling of the apron. (i.e. folding, draping or creasing the apron)
- A small amount of dark spot pinholing can appear which is inherent to the manufacturing process and as long as there are no dark spots exceeding 5mm in diameter, health physicists have determined they are of no concern. This should not be interpreted as defective manufacturing. There should be concern if you find dark spots or holes larger than 5mm or an area that shows many small spots clumped together.
- There should be concern if dark lines appear, as they usually indicate possible cracks or severe thinning in the material. This is normally caused by one or more layers of lead cracking or deteriorating as a result of excessive mishandling.
- Please inspect garments for any visible defects in workmanship and notify us immediately if your garment is not satisfactory.

## 2. Care of Aprons

**Storage:** Do not fold, crease, drape or sit with the apron pulled tightly. We strongly recommend that our aprons be hung on a Minc Heavy-Duty Chrome Hanger and not on a hook.

**Cleaning:** Keep your Minc garment clean by wiping away stains as soon as possible. Outer coverings can be cleaned with cold water and mild detergent. Do not submerge. Do not autoclave.

## 3. Guarantee & Warranty Disclaimer

Minc Aprons have been designed to meet the Canadian Standard of .5mm Pb equivalency frontal protection and .25mm Pb equivalency in the back panel. After receiving your apron, Canadian Standards require that you fluoro / x-ray all protective wear prior to use. In support of the Canadian Standards, Minc requires you to report any defects or discrepancy on lead equivalency with a written report and the x-ray within 14 days of receipt from **Ryan Medical**.

Minc proudly stands behind each product with a full guarantee on workmanship and materials for two years following the date of purchase. The seller's obligation is therefore limited exclusively to repair and the replacement of any defective products. The seller hereby disclaims all other warranties, either expressed or implied including any implied warranty of merchantability.

**Warning: Aprons are not to be exposed to extreme heat or cold. This will alter the state of the lead materials.**

## 4. Return Policy

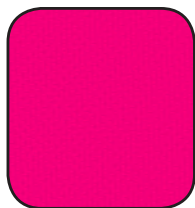
Non custom aprons may be returned within 15 days of receipt without penalty. Custom orders are non-refundable and non-returnable.

Authorization for all returns must be obtained in advance from Michelle Protective Wear's distributor sales agents or customer service department (Ryan Medical) before returning.

## 5. Questions?

**Please call Ryan Medical customer service line: 1-800-387-7142**

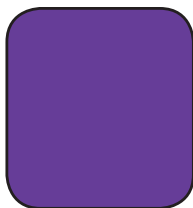
# Colour Chart



Hot Pink  
#1



Burgundy  
#2



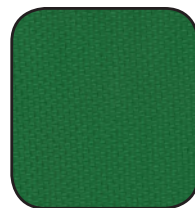
Purple  
#3



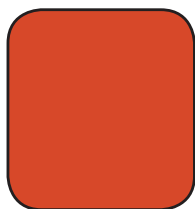
Teal  
#4



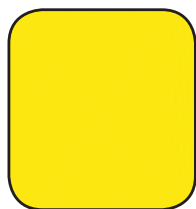
Forest Green  
#5



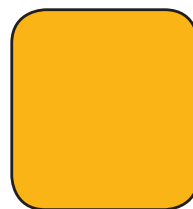
Kelly Green  
#6



Orange  
#7



Yellow  
#8



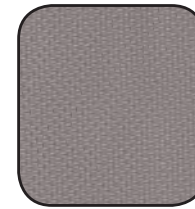
Gold  
#9



Royal Blue  
#10



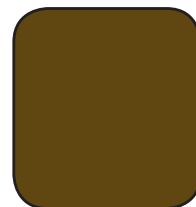
Navy Blue  
#11



Grey  
#12



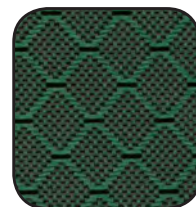
Black  
#13



Brown  
#14



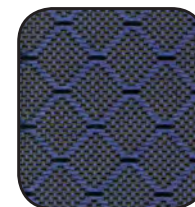
Cinnamon  
#20



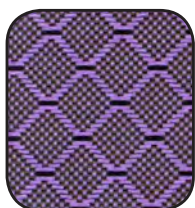
Kelly Green  
#21



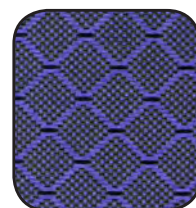
Black  
#22



Navy Blue  
#23



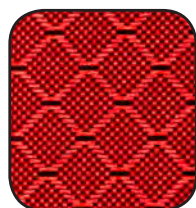
Purple  
#24



Royal Blue  
#25



Tan  
#26



Red  
#27



Silver  
#28



Splatter  
#31



Plaid  
#32



Ashley  
#33



Surf Wax  
#34



Tiki Blue  
#35



Leopard  
#36



Tiki Green  
#37



Orange Floral  
#38



Green Surf  
#39



Bermuda post card  
#40



Denim  
#41



Tie Dye Burgundy  
#42



Athens  
#43





Exclusively Distributed by Ryan Medical

Tel: 1-800-387-7142

Fax:(905)332-5105